

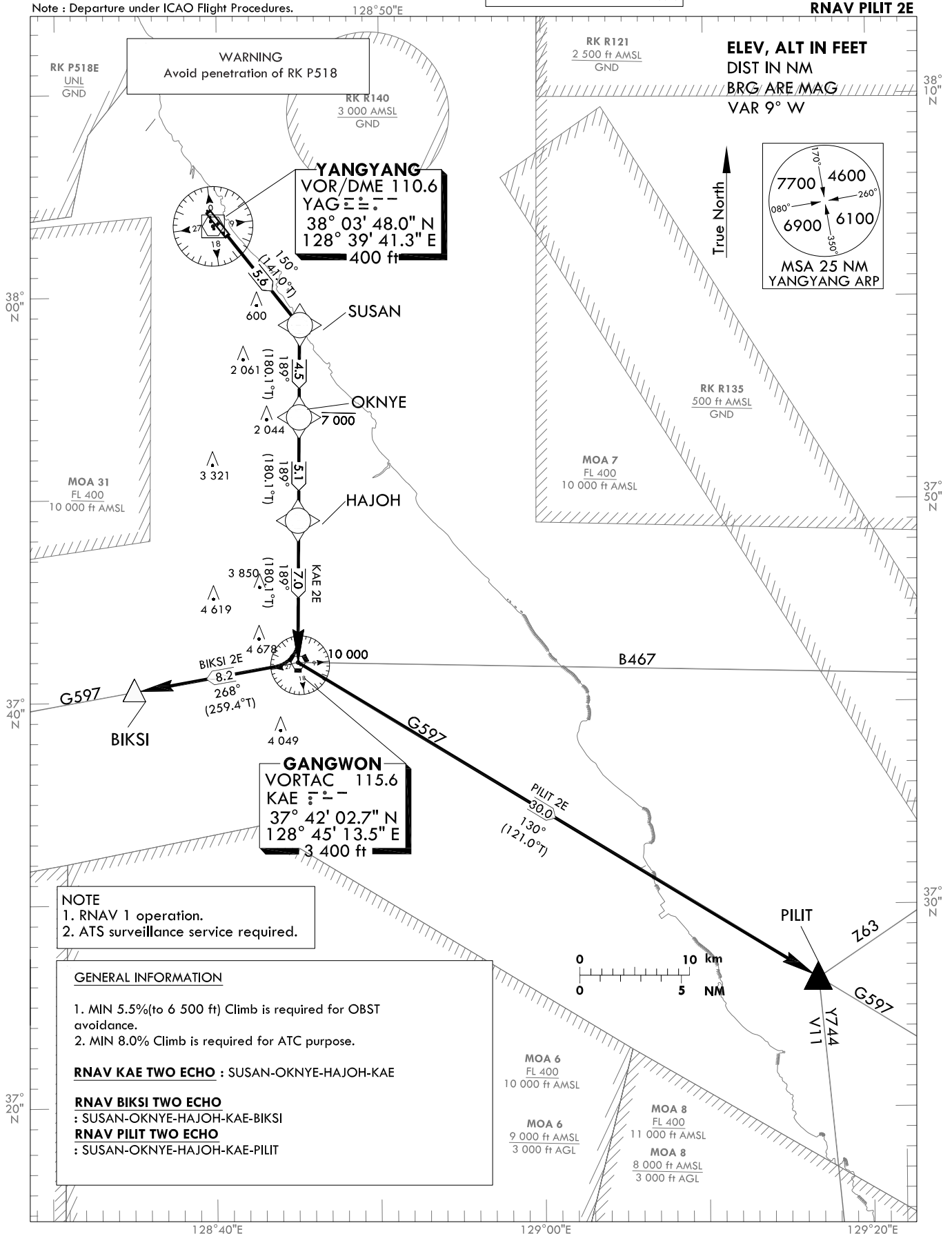
**STANDARD DEPARTURE  
CHART INSTRUMENT(SID) - ICAO**

TRANSITION ALT 14 000  
TRANSITION LVL FL140

GANGNEUNG DEP 124.6  
YANGYANG TWR 118.85  
124.375

**YANGYANG/Intl(RKNY)**  
RWY 15  
RNAV KAE 2E  
RNAV BIKSI 2E  
RNAV PILIT 2E

Note : Departure under ICAO Flight Procedures.



Change : Information of GANGNEUNG DEP frequency(134.4→124.6).

**YANGYANG Intl(RKNY)**  
RWY 15  
RNAV KAE 2E  
RNAV BIKSI 2E  
RNAV PILIT 2E

**AERONAUTICAL DATA TABULATION**

**Standard Instrument Departure Procedure Coding Tables**

RNAV KAE 2E												
Serial Number	Path Descriptor	Waypoint Identifier	Fly-over	Course/Track °M(°T)	Distance (NM)	Turn direction	Altitude (ft)	Speed (kt)	Coordinates	VPA/TCH*	Navigation specification	Remarks
001	CF	SUSAN	-	150(141.0)	5.6	-	-	-	375841.3 N 1284515.6 E	-	RNAV 1	-
002	TF	OKNYE	-	189(180.1)	4.5	-	-7 000	-	375409.1 N 1284515.0 E	-	RNAV 1	-
003	TF	HAJOH	-	189(180.1)	5.1	-	-	-	374903.2 N 1284514.4 E	-	RNAV 1	-
004	TF	KAE	-	189(180.1)	7.0	-	@10 000	-	374202.8 N 1284513.6 E	-	RNAV 1	-

RNAV BIKSI 2E												
Serial Number	Path Descriptor	Waypoint Identifier	Fly-over	Course/Track °M(°T)	Distance (NM)	Turn direction	Altitude (ft)	Speed (kt)	Coordinates	VPA/TCH*	Navigation specification	Remarks
001	CF	SUSAN	-	150(141.0)	5.6	-	-	-	375841.3 N 1284515.6 E	-	RNAV 1	-
002	TF	OKNYE	-	189(180.1)	4.5	-	-7 000	-	375409.1 N 1284515.0 E	-	RNAV 1	-
003	TF	HAJOH	-	189(180.1)	5.1	-	-	-	374903.2 N 1284514.4 E	-	RNAV 1	-
004	TF	KAE	-	189(180.1)	7.0	-	@10 000	-	374202.8 N 1284513.6 E	-	RNAV 1	-
005	TF	BIKSI	-	268(259.4)	8.2	-	-	-	374032.0 N 1283504.0 E	-	RNAV 1	-

RNAV PILIT 2E												
Serial Number	Path Descriptor	Waypoint Identifier	Fly-over	Course/Track °M(°T)	Distance (NM)	Turn direction	Altitude (ft)	Speed (kt)	Coordinates	VPA/TCH*	Navigation specification	Remarks
001	CF	SUSAN	-	150(141.0)	5.6	-	-	-	375841.3 N 1284515.6 E	-	RNAV 1	-
002	TF	OKNYE	-	189(180.1)	4.5	-	-7 000	-	375409.1 N 1284515.0 E	-	RNAV 1	-
003	TF	HAJOH	-	189(180.1)	5.1	-	-	-	374903.2 N 1284514.4 E	-	RNAV 1	-
004	TF	KAE	-	189(180.1)	7.0	-	@10 000	-	374202.8 N 1284513.6 E	-	RNAV 1	-
005	TF	PILIT	-	130(121.0)	30.0	-	-	-	372631.4N 1291730.8E	-	RNAV 1	-

\* The term TCH equates to the use of the term RDH, within this context of the FAS data block.

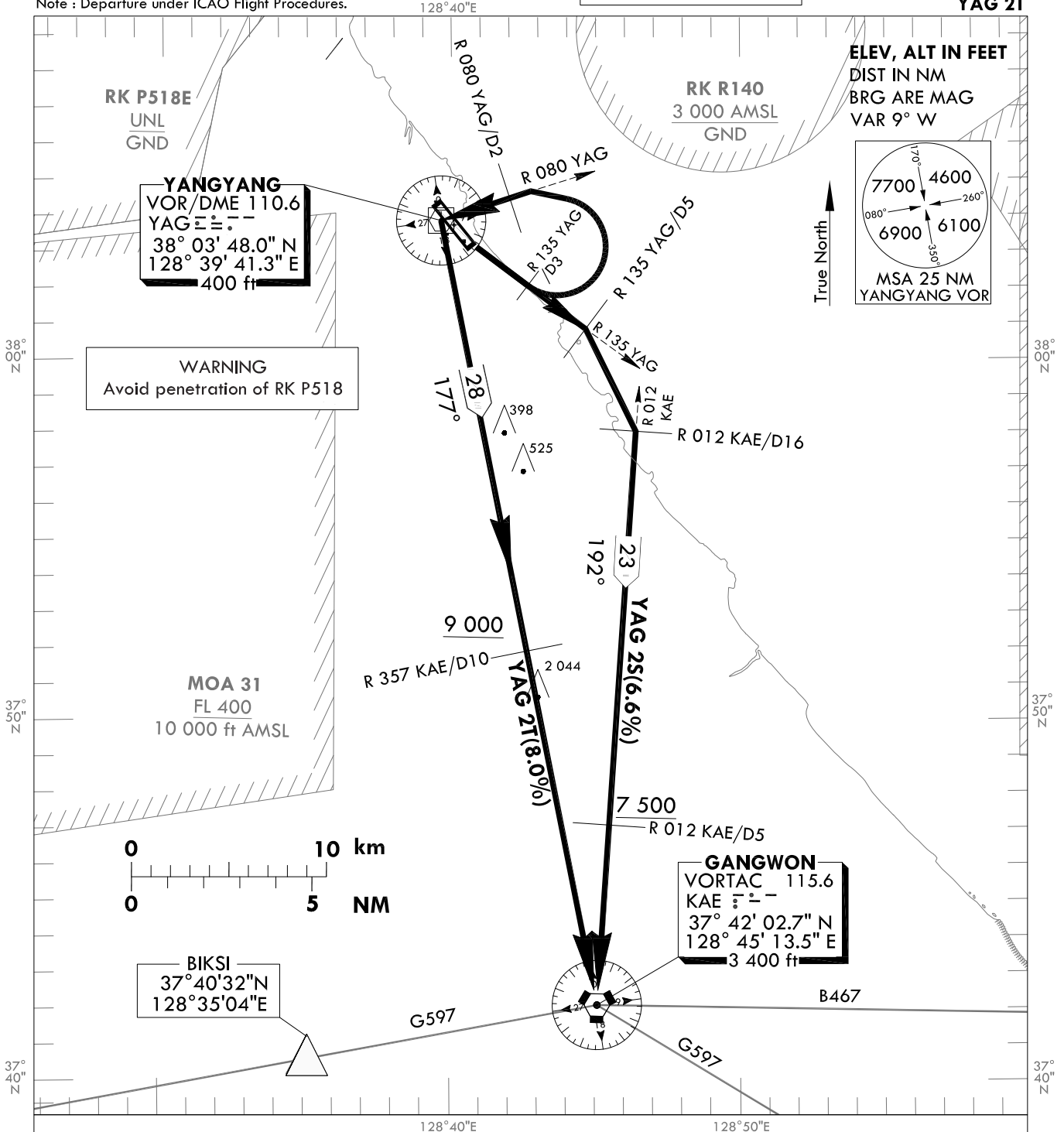
**STANDARD DEPARTURE CHART  
INSTRUMENT (SID) - ICAO**

TRANSITION ALT 14 000  
TRANSITION LVL FL 140

GANGNEUNG DEP 124.6  
YANGYANG TWR 118.85  
124.375

**YANGYANG/Intl(RKNY)**  
**RWY 15**  
**YAG 2S**  
**YAG 2T**

Note : Departure under ICAO Flight Procedures.



**SPEED CONTROL**

Maximum Speed for the first turn limited to 220 kt IAS for YANGYANG 2S, 250 kt IAS for YANGYANG 2T due to airspace restriction.

**NOTE**

1. Climb gradient in excess of 3.3% necessary for airspace and ATC purpose.  
-YANGYANG 2S minimum climb gradient 6.6% to 7 500 ft  
-YANGYANG 2T minimum climb gradient 8.0% to 9 000 ft
2. If unable to comply with flight restriction, request alternatives before departure.
3. Assignment of departure procedure depends on traffic situation around KAE.

**YANGYANG TWO SIERRA DEPARTURE**

Climb on R 135 YAG until YAG D5, then turn right and proceed R 012 KAE/D16, then proceed along R 012 KAE to KAE.  
Cross R 012 KAE/D5 at or above 7 500 ft.

**YANGYANG TWO TANGO DEPARTURE**

Climb on R 135 YAG until YAG D3, then turn left and proceed to YAG via R 080 YAG/D2, then proceed along R 357 KAE to KAE.  
Cross R357 KAE/D10 at or above 9 000 ft.

Change : Information of GANGNEUNG DEP frequency(134.4→124.6).

**INTENTIONALLY**

**LEFT**

**BLANK**

**STANDARD DEPARTURE  
CHART INSTRUMENT  
(SID) - ICAO**

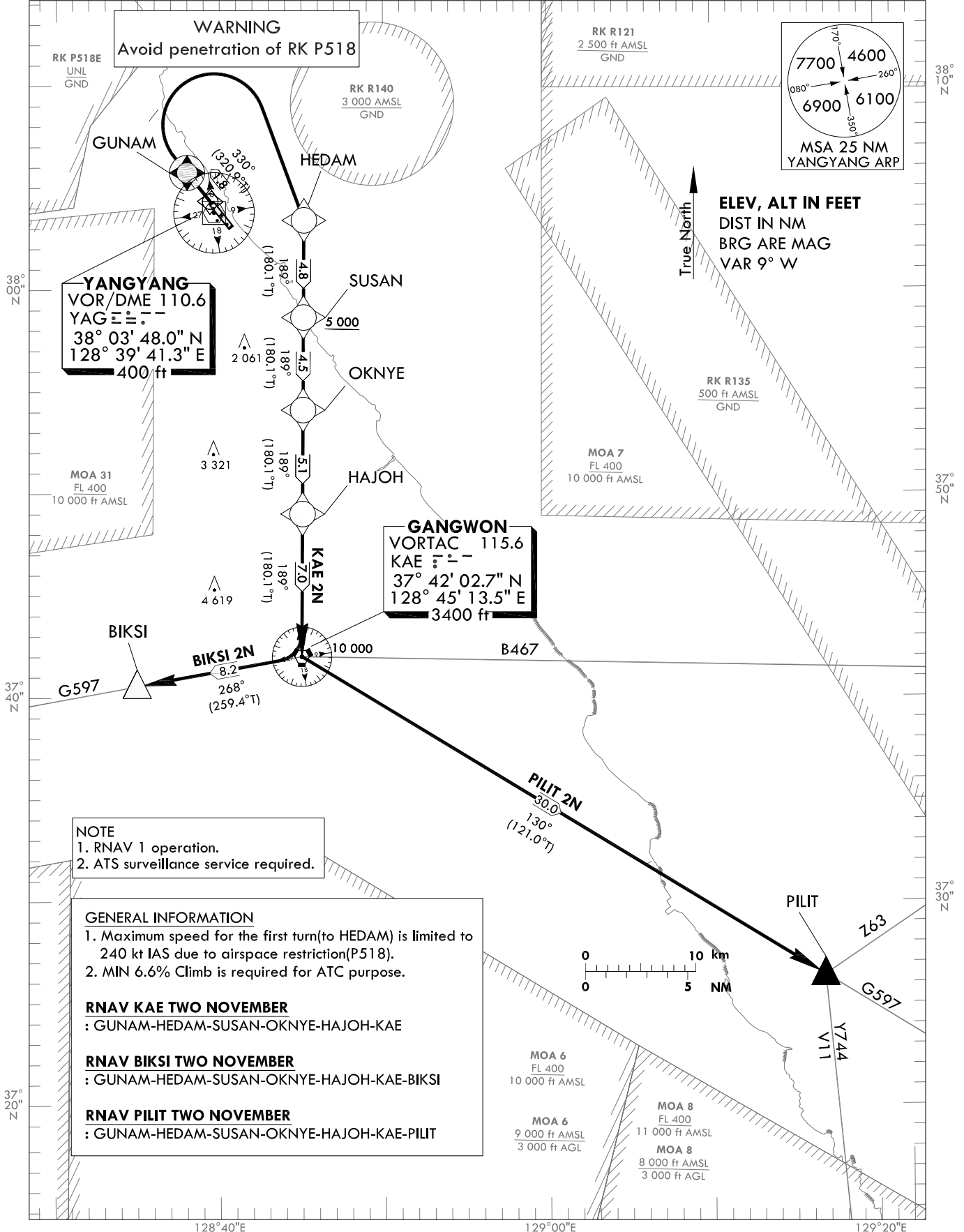
TRANSITION ALT 14 000  
TRANSITION LVL FL140

GANGNEUNG DEP 124.6  
YANGYANG TWR 118.85  
124.375

**YANGYANG/Intl(RKNY)**  
RWY 33  
RNAV KAE 2N  
RNAV BIKSI 2N  
RNAV PILIT 2N

Note : Departure under ICAO Flight Procedures.

128°50"E



**NOTE**  
1. RNAV 1 operation.  
2. ATS surveillance service required.

**GENERAL INFORMATION**  
1. Maximum speed for the first turn(to HEDAM) is limited to 240 kt IAS due to airspace restriction(P518).  
2. MIN 6.6% Climb is required for ATC purpose.

**RNAV KAE TWO NOVEMBER**  
: GUNAM-HEDAM-SUSAN-OKNYE-HAJOH-KAE

**RNAV BIKSI TWO NOVEMBER**  
: GUNAM-HEDAM-SUSAN-OKNYE-HAJOH-KAE-BIKSI

**RNAV PILIT TWO NOVEMBER**  
: GUNAM-HEDAM-SUSAN-OKNYE-HAJOH-KAE-PILIT

Change : Information of GANGNEUNG DEP frequency(134.4→124.6).

**YANGYANG Intl(RKNY)**  
RWY 33  
RNAV KAE 2N  
RNAV BIKSI 2N  
RNAV PILIT 2N

**AERONAUTICAL DATA TABULATION**

**Standard Instrument Departure Procedure Coding Tables**

RNAV KAE 2N

Serial Number	Path Descriptor	Waypoint Identifier	Fly-over	Course/Track °M(°T)	Distance (NM)	Turn direction	Altitude (ft)	Speed (kt)	Coordinates	VPA/TCH*	Navigation specification	Remarks
001	CF	GUNAM	Y	330(320.9)	1.8	-	-	-240	380545.5 N 1283800.9 E	-	RNAV 1	-
002	DF	HEDAM	-	-	-	R	-	-240	380327.0 N 1284516.2 E	-	RNAV 1	-
003	TF	SUSAN	-	189(180.1)	4.8	-	+5 000	-	375841.3 N 1284515.6 E	-	RNAV 1	-
004	TF	OKNYE	-	189(180.1)	4.5	-	-	-	375409.1 N 1284515.0 E	-	RNAV 1	-
005	TF	HAJOH	-	189(180.1)	5.1	-	-	-	374903.2 N 1284514.4 E	-	RNAV 1	-
006	TF	KAE	-	189(180.1)	7.0	-	@10 000	-	374202.8 N 1284513.6 E	-	RNAV 1	-

RNAV BIKSI 2N

Serial Number	Path Descriptor	Waypoint Identifier	Fly-over	Course/Track °M(°T)	Distance (NM)	Turn direction	Altitude (ft)	Speed (kt)	Coordinates	VPA/TCH*	Navigation specification	Remarks
001	CF	GUNAM	Y	330(320.9)	1.8	-	-	-240	380545.5 N 1283800.9 E	-	RNAV 1	-
002	DF	HEDAM	-	-	-	R	-	-240	380327.0 N 1284516.2 E	-	RNAV 1	-
003	TF	SUSAN	-	189(180.1)	4.8	-	+5 000	-	375841.3 N 1284515.6 E	-	RNAV 1	-
004	TF	OKNYE	-	189(180.1)	4.5	-	-	-	375409.1 N 1284515.0 E	-	RNAV 1	-
005	TF	HAJOH	-	189(180.1)	5.1	-	-	-	374903.2 N 1284514.4 E	-	RNAV 1	-
006	TF	KAE	-	189(180.1)	7.0	-	@10 000	-	374202.8 N 1284513.6 E	-	RNAV 1	-
007	TF	BIKSI	-	268(259.4)	8.2	-	-	-	374032.0 N 1283504.0 E	-	RNAV 1	-

RNAV PILIT 2N

Serial Number	Path Descriptor	Waypoint Identifier	Fly-over	Course/Track °M(°T)	Distance (NM)	Turn direction	Altitude (ft)	Speed (kt)	Coordinates	VPA/TCH*	Navigation specification	Remarks
001	CF	GUNAM	Y	330(320.9)	1.8	-	-	-240	380545.5 N 1283800.9 E	-	RNAV 1	-
002	DF	HEDAM	-	-	-	R	-	-240	380327.0 N 1284516.2 E	-	RNAV 1	-
003	TF	SUSAN	-	189(180.1)	4.8	-	+5 000	-	375841.3 N 1284515.6 E	-	RNAV 1	-
004	TF	OKNYE	-	189(180.1)	4.5	-	-	-	375409.1 N 1284515.0 E	-	RNAV 1	-
005	TF	HAJOH	-	189(180.1)	5.1	-	-	-	374903.2 N 1284514.4 E	-	RNAV 1	-
006	TF	KAE	-	189(180.1)	7.0	-	@10 000	-	374202.8 N 1284513.6 E	-	RNAV 1	-
007	TF	PILIT	-	130(121.0)	30.0	-	-	-	372631.4N 1291730.8E	-	RNAV 1	-

\* The term TCH equates to the use of the term RDH, within this context of the FAS data block.

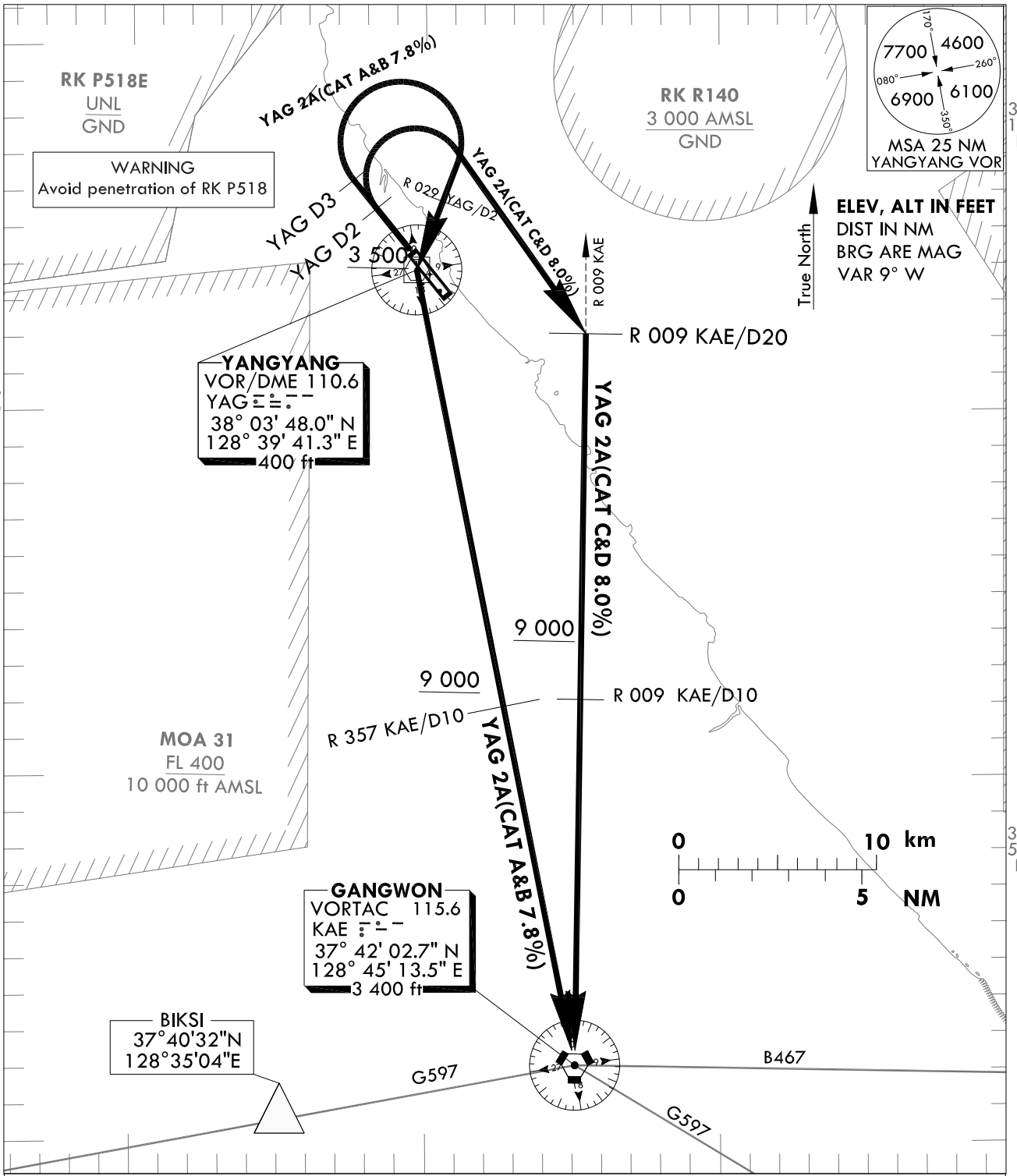
**STANDARD DEPARTURE  
CHART INSTRUMENT  
(SID) - ICAO**

TRANSITION ALT 14 000  
TRANSITION LVL FL140

GANGNEUNG DEP 124.6  
YANGYANG TWR 118.85  
124.375

**YANGYANG/Intl(RKNY)  
RWY 33  
YAG 2A**

Note : Departure under ICAO Flight Procedures.



**SPEED CONTROL**

Maximum Speed for the first turn limited to 240 kt IAS due to airspace restriction.

**NOTE**

1. Climb gradient in excess of 3.3% necessary for airspace and ATC purpose.  
-Minimum climb gradient for CAT A&B is 7.8% and for CAT C&D is 8.0% to 9 000 ft
2. Pilot shall use extreme caution not to penetrate RK P518 approx 7 DME NW of YAG.
3. If unable to comply with flight restriction, request alternatives before departure.

**YANGYANG TWO ALPHA DEPARTURE :**

CAT A & B : Climb on heading 329° to YAG D3, then turn right and proceed to YAG via R 029 YAG/D2, then proceed along R 357 KAE to KAE.  
Cross YAG at or above 3 500 ft, R 357 KAE/D10 at or above 9 000 ft.  
CAT C & D : Climb on heading 329° to YAG D2, then turn right and proceed to R 009 KAE/D20, then proceed along R 009 KAE to KAE.  
Cross R 009 KAE/D10 at or above 9 000 ft.

Change : Information of GANGNEUNG DEP frequency(134.4→124.6).

**INTENTIONALLY**

**LEFT**

**BLANK**